

TOOLS



TOOLS

SHOES.....	P2
KNEE PADS AND FOAM BOARD.....	P3
ROLLING SEATS AND TROLLEYS.....	P4
"RV175" VACUUM PUMP SUCTION CUP.....	P5
SINGLE, DOUBLE AND TRIPLE SUCTION CUPS.....	P6
SLABS LIFTERS.....	P7
SCREEDING TOOLS.....	P8
ANTI-BOUNCE HAMMERS AND HAND TILE BEATER.....	P9
WOLFRAM CARBIDE DISCS FOR GRINDER AND SCRAPING TOOLS.....	P10

MEASURING AND LAYOUT TOOLS

ADJUSTABLE SQUARE AND ANGLE GUIDES, STEP-SETTER (FOR SETTING STAIRS) WALL LEVELLING GUIDES.....	P11
TOOLS BAG.....	P12

In addition to the tools already shown in the previous sections, professional tile installers need many others; such as knee pads, suction cups, trolleys, workbenches, hammers... as well as measuring and layout tools. All carefully designed to provide the professionals the highest efficiency and precision. From the adjustable squares, to the innovative system to set mortar base. And again the very useful wall leveling guides as well as the practical angle guides and the step-setter.



SHOES

MADE IN ITALY



137



137MOLLA



137B



137BMOLLA



137HUSKY



PACKAGE



CARTON BOX

WAFFLED SHOES FOR WALKING ON SET TILE

- Made of impact resistant plastic with a "waffled" (textured) bottom to provide grip and to distribute the wearers weight evenly over the surface.
- The toe-guard is included and designed to accommodate most safety-shoes.
- Available with spring or elastic straps.
- Shoes are perfectly flat in order to distribute weight evenly over the surface.
- Shoe surface measures approximately 20x39 cm (12 square inches).

Part No.	Barcode	Box Icon	Description	Weight (Kg)	Weight (lbs)	Dimensions (cm)	Dimensions (in)	Weight (Kg)	Weight (lbs)
137	8024648000019	10	Tiles shoes with elastic strap (per pair)	1,2 Kg	2.6 lbs	50x43xh 43 cm	19 5/8"x17"xh 17"	13,2 Kg	29.1 lbs
137MOLLA	8024648000026	10	Tile shoes with spring (per pair)	1,3 Kg	2.9 lbs			14,2 Kg	31.3 lbs

SMOOTH SHOES FOR WALKING ON MORTAR BASE

Part No.	Barcode	Box Icon	Description	Weight (Kg)	Weight (lbs)	Dimensions (cm)	Dimensions (in)	Weight (Kg)	Weight (lbs)
137B	8024648000033	12	Shoes for mortar base with elastic strap (pair)	1,1 Kg	2.4 lbs	50x43xh 43 cm	19 5/8"x17"xh 17"	14,4 Kg	31.7 lbs
137BMOLLA	8024648000040	12	Shoes for mortar base with spring (pair)	1,2 Kg	2.6 lbs			15,6 Kg	34.4 lbs

SHOES FOR WALKING ON THE ADHESIVE WHILE SETTING TILES

- Steel bottom, replaceable toe-guard made of nylon. The toe-guard is designed for safety-shoes. Straps to the shoe with a spring strap.

Part No.	Barcode	Box Icon	Description	Weight (Kg)	Weight (lbs)	Dimensions (cm)	Dimensions (in)	Weight (Kg)	Weight (lbs)
137HUSKY	8024648000057	4	Toothed shoes "Husky" (per pair)	1,7 Kg	3.7 lbs	35x27xh 31 cm	14"x10 5/8"x h 12"	7,1 Kg	15.7 lbs

REPLACEMENT PARTS

Part No.	Barcode	Box Icon	Description	Weight (Kg)	Weight (oz)	Dimensions (cm)	Dimensions (in)	Weight (Kg)	Weight (oz)
196	8024648004888	10	Elastic strap for shoes	20 gr	0.7 oz	-	-	200 gr	7.1 oz
314TR02D	8024648005236	10	Spring with clip	40 gr	1.4 oz	27x15xh 10 cm	10 5/8"x6"xh 4"	400 gr	14.1 oz
137FE01D	8024608011918	20	Elastic strap holder	1 gr	0.04 oz	-	-	20 gr	0.7 oz





138RELAX



138SOFF



138



PACK



BOX



BOX



196GCA



330



KNEE PADS RELAX-GEL

- Plastic shell: maximum knee protection.
- Gel inner padding.

- Comfort elastic fabric with single strap system.

Part No.	Barcode	Box	Description	Weight	Dimensions	Volume	Weight
138RELAX	8024648062680	12	Knee pads (per pair)	600 gr 21.1 oz	49x40xh34 cm	19 1/4"x15 3/4"xh 13 3/8"	7,9 Kg 17.4 lbs

KNEE PADS WITH RIBBING

- For Knee protection.
- Replaceable soft foam inserts.

- Useful when using sand or mortar (mud bed) layouts. The ribbing flexes with the knee so that the knee pad stays in contact with the leg to prevent sand or other particles from getting in between the knee and knee pad.

Part No.	Barcode	Box	Description	Weight	Dimensions	Volume	Weight
138SOFF	8024648000088	12	Knee pads with ribs (per pair)	610 gr 21.5 oz	39x35xh 31 cm	15 3/8"x13 3/4"xh 12 1/4"	7,7 Kg 17 lbs

KNEE PADS

- For knee protection.

- Made of molded polyurethane, in one piece. These knee pads are very durable.

Part No.	Barcode	Box	Description	Weight	Dimensions	Volume	Weight
138	8024648000071	16	Knee pads (per pair)	350 gr 12.3 oz	39x35xh 31 cm	15 3/8"x13 3/4"xh 12 1/4"	6 Kg 13.2 lbs

"MORBIDONE" FOAM BOARD

- Made of a single piece of molded polyurethane. This foam knee board solves the problem of knee protection for those who cannot wear straps behind the knees.

Part No.	Barcode	Box	Description	Weight	Dimensions	Volume	Weight
330	8024648000095	5	"Morbidone" Foam knee board	800 gr 31.7 oz	58x30xh 25 cm	22 7/8"x11 3/4"xh 9 7/8"	4,6 Kg 10.1 lbs

REPLACEMENT PARTS

Part No.	Barcode	Box	Description	Weight	Dimensions	Volume	Weight
138IM03D	8024648011909	2	Inserts for knee pads with ribs	80 gr 2.8 oz	27x15xh 10 cm	10 5/8"x6"xh 4"	200 gr 7 oz
196GCA	8024648064141	10	Fabric band with hooks for knee pads	-	-	-	-



ROLLING SEATS, TROLLEYS AND WORK BENCHES

MADE IN ITALY



383COMBI



384TRI



394



394MA RAI



394MA PLUS

TECHNICAL CHARACTERISTICS



FOLDING LEGS



PATENTED

min: 100 cm
max: 150 cm

PACKAGE



CARTON BOX

"NELSON" ROLLING SEAT WITH KNEE PAD

- Comfortable, strong, steady, designed to prevent occupational injuries associated with the knees and back.
- Ideal for adhesive spreading or any other job where being in a stooped/kneeling position for a period of time is needed.
- Adjustable height from 25 a 35 cm (10" - 13 3/4") to transfer the weight through the seat rather than through the knees.

Part No.	Barcode	Box	Description	Weight	Volume	Dimensions	Weight
383COMBI	8024648015396	1	"Nelson"	10 Kg / 22 lbs	61x43x14 cm	24"x17"xh 5 1/2"	11,4 Kg / 25.1 lbs

"ELIA" BUCKET-HOLDER / TILE DOLLY

- Use with the cover for carrying a bucket or stacks of tile.
- Easy to move on free-spinning wheels (3).
- Use without the cover to tilt the bucket for easier access to the adhesive.

Part No.	Barcode	Box	Description	Weight	Volume	Dimensions	Weight
384TRI	8024648006325	1	"Elia"	3 Kg / 6.6 lbs	40x40x15 cm	15 3/4"x15 3/4"x h 6"	3,4 Kg / 7.5 lbs

"PUGIOL" WORK BENCH

- Useful as a work bench and also as a platform due to the strong steel frame.
- Stand folds down for easy transport.
- Work bench size: 45x77xh 74 cm (17 3/4"x30 1/8"xh 29").
- Dimensions in transport position: 100x45xh 11 cm (40"x17 3/4"xh 4 3/8").

Part No.	Barcode	Box	Description	Weight	Volume	Dimensions	Weight
394	8024648003645	1	"Pugiol"	9 Kg / 19.8 lbs	100x50x12 cm	40"x20"xh 4 3/4"	10 Kg / 22 lbs

MODULAR BENCH WITH FOLDING LEGS : BM180^{RAI} AND BM180^{PLUS}

- Both equipped with folding legs to put the product in transport configuration quickly and easily.
- The steel structure and the worktop made of anodized aluminum profiles guarantee sturdiness and stability.
- Both with legs provided with adjustable rubber feet.
- Both provided with adjustable anodized aluminum profiles.
- BM180^{RAI}: height: 83 cm (32 3/4"). Max load: 150 Kg (331 lbs). Worktop dimensions: 180 x 90 cm (3'x6').
- BM180^{PLUS}: height: 83 cm (32 3/4"). Max load: 150 Kg (331 lbs). Width: from 100 cm (3.2') up to 150 cm (4.9').

Part No.	Barcode	Box	Description	Weight	Volume	Dimensions	Weight
394MA RAI	8050532000995	1	"BM180 ^{RAI} " - modular bench with folding legs	31 Kg / 68.3 lbs	117x20x h 20 cm + 190x21x h 10 cm	46"x8"x h 8" + 75"x8"x h 14"	35 Kg / 77 lbs
394MA PLUS	8050532007062	1	"BM180 ^{PLUS} " - modular bench width 100-150 cm modular bench with folding legs	38 Kg / 83.7 lbs	117x20x h 20 cm + 190x21x h 10 cm	46"x8"x h 8" + 75"x8"x h 14"	39,8 Kg / 87.7 lbs



1 pc art. 394MA PLUS
Dim.: 180x100-150 cm



2 pcs art. 394MA RAI
Dim.: 360x90 cm

TOOLS



PATENTED



185WA01VRV

Maintenance kit and protection cup.



PACKAGE



"VACUUM" PUMP SUCTION CUP WITH VACUUM GAUGE

- RV 175: "vacuum" pump suction cup with vacuum gauge designed for handling ceramic tiles and slabs that guarantees perfect grip even on textured tiles. RV 175 is also suitable for lifting any non-porous material such as marble, granite, glass, etc.
- The vacuum gauge allows to constantly monitoring the gripping status of the suction cup, informing the operator when it is necessary to restore the vacuum level.
- The stain-free rubber cup is easily removable from the die-cast aluminum main body and can therefore be replaced if necessary.

- RV 175 is equipped with a carry case, complete with protection cup and maintenance kit.
- The vacuum gauge is protected against impacts and can be easily replaced, if necessary. In the event of accidental breakage, a dedicated screw is included into the maintenance kit, which allows the suction cup to be used without the vacuum gauge.
- High performance vacuum valve, resistant to corrosion.
- Maximum load capacity: 130 Kg (286.6 lbs). Safety factor 1.5.
- Ø 175 mm (6 7/8") cup.

MODEL AND SPECIFICATIONS

Part No.	Barcode	Box	Description	Weight	Dimensions
185WA01VRV	8050532011281	1	RV175 - "Vacuum" pump suction cup with vacuum gauge	1,7 Kg 3.7 lbs	34x30xh 13 cm 13 1/2" x 11 x h 5 1/8"

REPLACEMENT PARTS

Part No.	Barcode	Box	Description	Weight	Dimensions
185WR01A	8050532011434	1	Suction cup rubber + pads	145 gr 5.1 oz	-
185WR02A	8050532011441	1	Vacuum gauge + OR	30 gr 1 oz	-



SINGLE, DOUBLE AND TRIPLE SUCTION CUPS

MADE IN ITALY



MEDUSA - SINGLE PAD SUCTION CUP FOR TILES WITH SMOOTH SURFACE

- Professional suction cup with single pad for handling ceramic tiles and other non-porous materials (i.e.: glass).
- Only suitable for tiles with smooth (untextured) tile surfaces.
- Ergonomic handle to engage/disengage tiles with a single hand.

- Ø 115 mm (4.5") rubber pad with metal insert.
- Maximum load capacity with tile on horizontal position (on smooth and clean surfaces): 24 Kg – 59.2 lbs (safety factor 1.5).
- Supplied packed into a display box with removable lid (holds 10 pieces).

Part No.	Barcode	Box	Description	Weight	Volume	Dimensions	Capacity
185	8024648000354	10	Medusa - single pad suction cup for tiles with smooth surface	340 gr / 12 oz	27x39xh 20 cm	10 5/8"x15 1/8"xh 8"	3,7 Kg / 8.1 lbs

MEDUSA PLUS - SINGLE PAD SUCTION CUP FOR TILES WITH BOTH SMOOTH AND STRUCTURED SURFACE

- Professional suction cup with single pad for handling ceramic tiles and other non-porous materials (i.e.: glass).
- Suitable for tiles with both smooth and textured surfaces thanks to its special triple-lip rubber pad.
- Ergonomic handle to engage/disengage tiles with a single hand.
- Ø 112 mm (4.4") pad made of stain-free gray rubber with metal insert.

- Rubber pad with tab for easy release from the smoothest surfaces.
- Maximum load capacity with tile on horizontal position (on smooth and clean surfaces): 30 Kg – 66.1 lbs (safety factor 1.5).
- Supplied packed into a display box with removable lid (holds 10 pieces).

Part No.	Barcode	Box	Description	Weight	Volume	Dimensions	Capacity
185MEMK3RP	8050532023857	10	Medusa PLUS - single pad suction cup for tiles with both smooth and structured surface	340 gr / 12 oz	27x39xh 20 cm	10 5/8"x15 1/8"xh 8"	3,7 Kg / 8.1 lbs

BIVENTOSA PLUS - DOUBLE PAD SUCTION CUP FOR TILES WITH BOTH SMOOTH AND TEXTURED SURFACE

- Professional suction cup with double pad for handling ceramic tiles and slabs and other non-porous materials (i.e.: glass).
- Suitable for tiles with both smooth and textured surfaces thanks to its special triple-lip rubber pad.
- Sturdy, light and long-lasting die-cast aluminum body.
- Ø 112 mm (4.4") pad made of stain-free gray rubber with metal insert.

- Rubber pad with tab for easy release from the smoothest surface.
- Maximum load capacity with tile on horizontal position (on smooth and clean surfaces): 57 Kg – 125.6 lbs (safety factor 1.5).
- Supplied packed into a display box with removable lid (holds 6 pieces).

Part No.	Barcode	Box	Description	Weight	Volume	Dimensions	Capacity
185BIMK3RP	8050532023840	6	Biventosa PLUS - double pad suction cup for tiles with both smooth and textured surface	815 gr / 28.7 oz	27x39xh 20 cm	10 5/8"x15 1/8"xh 8"	5,2 Kg / 11.5 lbs

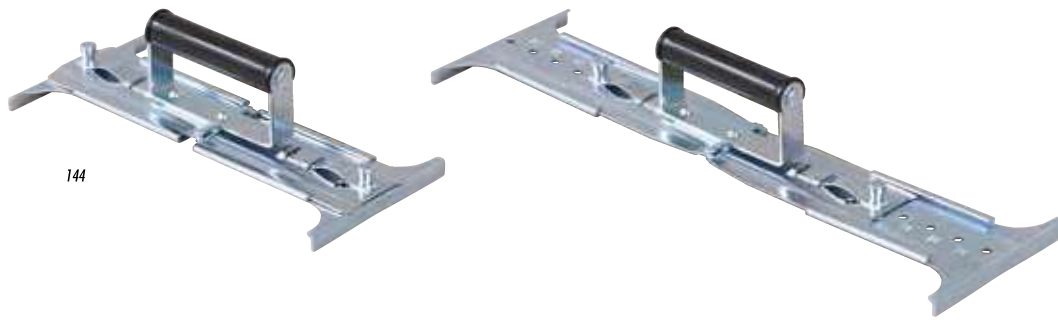
TRIVENTOSA PLUS - TRIPLE PAD SUCTION CUP FOR TILES WITH BOTH SMOOTH AND STRUCTURED SURFACE

- Professional suction cup with triple pad for handling ceramic tiles and slabs and other non-porous materials (i.e.: glass).
- Suitable for tiles with both smooth and textured surfaces thanks to its special triple-lip rubber pad.
- Sturdy, light and long-lasting die-cast aluminum body.
- Ø 112 mm (4.4") pad made of stain-free gray rubber with metal insert.

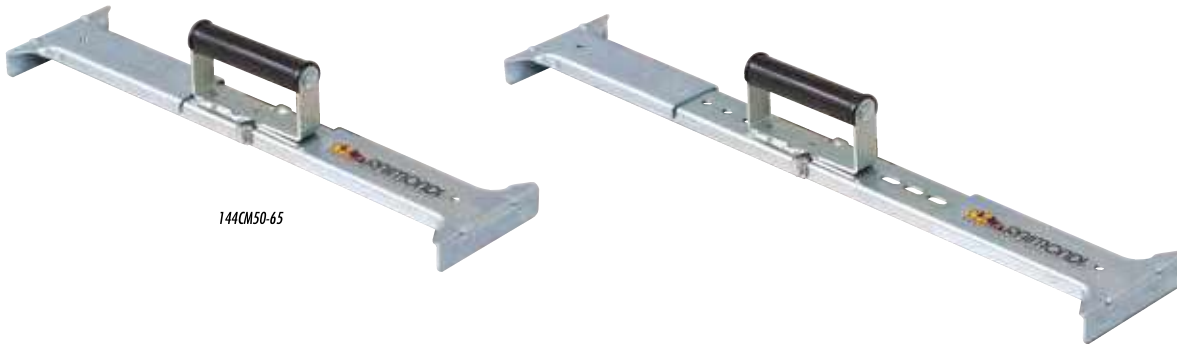
- Rubber pad with tab for easy release from the smoothest surfaces.
- Maximum load capacity with tile on horizontal position (on smooth and clean surfaces): 74 Kg – 163.1 lbs (safety factor 1.5).
- Supplied packed into a display box with removable lid (holds 4 pieces).

Part No.	Barcode	Box	Description	Weight	Volume	Dimensions	Capacity
185TRMK3RP	8050532023949	4	Triventosa PLUS - triple pad suction cup for tiles with both smooth and structured surface	1,15 Kg / 2.5 lbs	27x39xh 20 cm	10 5/8"x15 1/8"xh 8"	4,9 Kg / 10.8 lbs





144



144CM50-65



144CM50-120



SLAB LIFTER (MAX EXTENSION 50 cm)

- To lift and lay tiles and large stone, such as terrazzo, etc..
- To facilitate lifting and reduce stress to the hands and fingers.
- For sizes of: 30-35-40-45-50 cm (11 7/8"-13 3/4"- 15 3/4" - 17 3/4" - 19 5/8").

EXTENDING SLAB LIFTERS 50-65

- For handling and laying large format slabs (max 65x65 cm - 25 1/2") with high thickness and structured surfaces.
- Variable extension from 50 to 65 cm (19 5/8" to 25 1/2").
- Sturdy and reliable galvanized steel structure.
- Minimum required joint: 3 mm (1/8").

EXTENDING SLAB LIFTERS 50-120

- For handling and laying large format slabs (max length 120 cm - 47 1/4") with high thickness and structured surfaces.
- Variable extension from 50 to 120 cm (19 5/8" to 47 1/4").
- Sturdy and reliable structure made of aluminum and steel.
- Double handle.
- Minimum required joint: 3 mm (1/8").

Part No.			Description						
144	8024648000347	10	Slab lifter	1,1 Kg	2.4 lbs	40x40 xh 15 cm	15 3/4"x15 3/4"xh 6"	11,4 Kg	25.1 lbs
144CM50-65	8024648084071	2	Extension for slab lifter 50/65 cm	2 Kg	4.4 lbs	71x23xh 12 cm	28"x9"xh 4 3/4"	4,3 Kg	9.5 lbs
144CM50-120	8024648084750	2	Extension for slab lifter 50/120 cm	4,4 Kg	9.7 lbs	117x20xh 20 cm	46"x8"xh 8"	10,2 Kg	22.5 lbs



SCREEDING TOOLS

MADE IN ITALY



141PASQ



145SLITTA



197180CM



197CF

197SC

MADE IN ITALY



421

MADE IN ITALY



232 RAI

232WALL R

MADE IN ITALY

PACKAGE



TEMPERED STEEL MORTAR SPREADER

- To spread cement and sand screed, asphalt, sand mixtures etc...

- Strong and light. Can be used with aluminum pole 133-178 cm (70" - 52").

Part No.	Barcode	Box	Description	Length	Weight	Volume	Dimensions	Weight
141PASQ	8024648000972	12	Steel mortar spreader without pole	55 cm / 21 5/8"	820 gr / 28.9 oz	58x30xh 25 cm	23"x12"xh 10"	10,3 Kg / 22.7 lbs

ANODIZED ALUMINUM POLE

- Superior strength, available in multiple lengths. Sectional version also available.

Part No.	Barcode	Box	Description	Ø	Length	Weight	Volume	Dimensions	Weight
197180CM	8024648000644	12	With hole	27 mm	178 cm / 70"	600 gr / 21.2 oz	180x25xh 25 cm	70"x10"xh 10"	7,7 Kg / 17 lbs
197CF	8024648000316	12	With hole	1/16"	140 cm / 55"	420 gr / 14.8 oz	140x25xh 9 cm	55"x10"xh 3 1/2"	5,5 Kg / 12.1 lbs
197SC	8024648014511	12	Sectional with hole	1/16"	133 cm / 52"	530 gr / 18.7 oz	71x23xh 15 cm	28"x9"xh 6"	6,7 Kg / 14.8 lbs

"SLITTING" STEEL SLIDE KIT

- Kit of 4 steel slides, 1500x50x5/10 mm (4'1"x2"x 9/16").
- To be laid on reference strips to make up the screed rails, creates a straight, smooth surface for the level or screed to slide on.

Part No.	Barcode	Box	Description	Length	Weight	Volume	Dimensions	Weight
145SLITTA	8024648004635	1	Slides for screed (kit 4 pcs)	150 cm / 59"	1,1 Kg / 2.4 lbs	31x31xh 5 cm	12 1/4"x12 1/4"xh 2"	1,3 Kg / 2.9 lbs

"KESSLER" HANDLES FOR STRAIGHT EDGE / LEVELS

- Now you can put a pair of "handles" on your straight edge or level. A unique way to give your old straight edge, screed bar, or level, an ergonomic upgrade.
- For straight levels of minimum height of 50 mm (2") and thickness from 15 to 35 mm (5/8" - 1 3/8").

Part No.	Barcode	Box	Description	Weight	Volume	Dimensions	Weight
421	8024648007124	1	"Kessler" (pair)	900 gr / 35 oz	-	-	2 Kg / 4.4 lbs

SHEATH-PRESSER

- Roll for easy, fast, and even, laying of preformed membrane laid with adhesive.
- Height-adjustable-shaft provided with double handles.
- Available also the version for use on wall or small areas (art. 232 WALL R).

Part No.	Barcode	Box	Description	Weight	Volume	Dimensions	Weight
232 RAI	8024648073587	4	Sheath-presser-roller	5,8 Kg / 12.8 lbs	135x42xh 28 cm	53"x16 1/2"xh 11"	26,7 Kg / 58.9 lbs
232WALL R	8024648097415	4	Sheath-presser-roller for wall	0,7 Kg / 1.5 lbs	20x21xh 5 cm	8x8 1/4"xh 2"	7.7 Kg / 3,5 lbs



TOOLS



1761KGBC



176500BC



142



142G

PACKAGE



CARTON BOX

WHITE, NON-MARRING RUBBER MALLET

- The white non-marring rubber leaves no mark on the tile.
- All mallets are balanced to reduce stress to the wrists.
- Molded in a single-piece, the handle is reinforced with a steel core for superior strength.

Part No.	Barcode	Box	Description	Weight	Dimensions	Volume	Weight
1761KGBC	8024648098122	8	White rubber mallet	1 Kg / 2.2 lbs	40x32xh 12 cm	15 3/4"x12 5/8"xh 4 3/4"	8,5 Kg / 18.7 lbs
176500BC	8024648098139	12	White rubber mallet	500 gr / 17.6 oz	40x32xh 12 cm	15 3/4"x12 5/8"xh 4 3/4"	6,5 Kg / 14.3 lbs

PLASTIC TILE BEATER

- Prevents tile lippage and ensures adequate bond between tile and adhesive.
- Plastic construction does not warp with humidity.
- Grooved, flat base prevents suctioning so the beater does not stick to the tile.
- The off-set handle provides a larger striking surface. Depth: 15 mm (5/8").

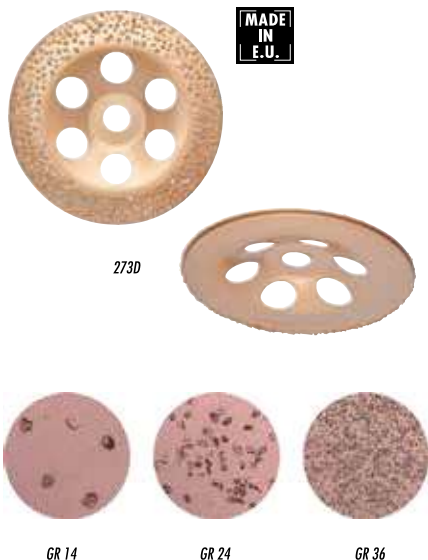
Part No.	Barcode	Box	Description	Weight	Dimensions	Volume	Weight
142	8024648000910	6	Plastic tile beater	1,5 Kg / 3.3 lbs	17x37 cm / 6 1/2"x14 1/2"	40x40xh 15 cm / 15 3/4"x15 3/4"xh 6"	9,4 Kg / 20.7 lbs

RUBBER ANTI-BOUNCING TILE BEATER

- To improve adhesive bonding and to expel air from underneath the slabs/tiles.
- Rubber bottom to prevent tiles/slabs damages.
- Sturdy metal framework.
- The off-set handle increases effectiveness.

Part No.	Barcode	Box	Description	Weight	Dimensions	Volume	Weight
142G	8024648078582	6	Rubber tile beater	1,9 Kg / 4.2 lbs	145x350 mm / 5 3/4"x13 3/4"	40x40xh 15 cm / 5 3/4"x12 5/8"xh 4 3/4"	11,4 Kg / 25.1 lbs





MADE IN E.U.



MADE IN ITALY



MADE IN ITALY

PACKAGE



CARTON BOX

WOLFRAM CARBIDE DISCS FOR GRINDER

• Suitable for: cement, wood, bricks, plastic plaster, marble, tiles, adhesive, plastic, fibreglass, rust, paints, etc.

- Performance: last 150 times more than sand paper. Working times: reduced to 30/50% when compared to sandpaper.
- It does not get easily blocked. It gets simply cleaned with a steel-wire brush.

Part No.	Barcode	Box	Description	Ø	Grain	Weight	Carton Box	Weight
273D115 W14	8024648074751	1	Wolfram carbide discs for grinder	115 mm 4 1/2"	14	0,3 Kg 10,6 oz	-	-
273D115 W24	8024648074768	1	Wolfram carbide discs for grinder		24			
273D115 W36	8024648074775	1	Wolfram carbide discs for grinder		36			
273D125 W14	8024648074782	1	Wolfram carbide discs for grinder	125 mm 5"	14	0,27 Kg 9,5 oz	-	-
273D125 W24	8024648074799	1	Wolfram carbide discs for grinder		24			
273D125 W36	8024648074805	1	Wolfram carbide discs for grinder		36			
273D180 W14	8024648074812	1	Wolfram carbide discs for grinder	180 mm 7"	14	0,5 Kg 17,6 oz	-	-
273D180 W24	8024648074829	1	Wolfram carbide discs for grinder		24			
273D180 W36	8024648074836	1	Wolfram carbide discs for grinder		36			

"FAKIRO" PLASTER RASP

• To remove irregularities on the plaster surface prior to finishing.

Part No.	Barcode	Box	Description	Dimensions	Weight	Dimensions	Weight
347RAS480	8024648015402	9	"Fakiro" Plaster Rasp 480 V	25x14,5 cm 10"x5 3/4"	400 gr 14.1 oz	40x40xh 15 cm 15 3/4"x15 3/4"xh 6"	4 Kg 8.8 lbs
347RIC480U	8024608059307	24	Replacement blades	25x14,5 cm 10"x5 3/4"	300 gr 10.6 oz	33x33xh 10 cm 13"x13"xh 3 5/16"	7,6 Kg 16.8 lbs

SCRAPER WITH STEEL BLADE

To remove adhesive, paint, etc... waste. Can be pole mounted to be used in a standing position.

Part No.	Barcode	Box	Description	Scraper blade size	Weight	Dimensions	Weight
347 10	8024648000699	10	"Ginnetto" steel blade scraper	10 cm 4"	260 gr 9.2 oz	33 x 33 xh 10 cm 13"x13"xh 3 5/16"	3 Kg 6.6 lbs
347 15	8024648000705	10	"Ginnetto" steel blade scraper	15 cm 6"	320 gr 11.3 oz		3,6 Kg 7.9 lbs
347 20	8024648000712	10	"Ginnetto" steel blade scraper	20 cm 8"	380 gr 13.4 oz		4,2 Kg 9.3 lbs
347 25	8024648000729	8	"Ginnetto" steel blade scraper	25 cm 10"	440 gr 15.5 oz		3,9 Kg 8.6 lbs

ANODIZED ALUMINUM POLE

• Superior strength, available in multiple lengths. Sectional version also available.

Part No.	Barcode	Box	Description	Ø	Length	Weight	Dimensions	Weight
197180CM	8024648000644	12	With hole	27 mm 1 1/16"	178 cm 70"	600 gr 21.2 oz	180x25xh 9 cm 70"x10"xh 10"	7,7 Kg 17 lbs
197CF	8024648000316	12	With hole		140x25xh 9 cm 55"x10"xh 3 1/2"	420 gr 21.2 oz	5,5 Kg 12.1 lbs	
197SC	8024648014511	12	Sectional with hole		133 cm 52"	530 gr 18.7 oz	71x23xh 25 cm 28"x9"xh 6"	6,7 Kg 14.8 lbs





LEVEL PLUMB JOINTED SQUARE

- This is truly a one of a kind level. There are positive stops at 0°/45°/90°/135°/180° all on one level.
- The unique design allows this level to be folded in half for convenient storing.

45° position for laying out diagonal floors.
 90° position for setting square on floors or to check the plumb.
 180° position to check the level and to take measurements (item 186 up to 200 cm - 6' 6 3/4"; item 187 up to 200 cm - 6.5").

Part No.						
186	8024648000859	1	100 cm 3' 3 3/8"	1,2 Kg 2.6 lbs	102x12xh 6 cm 3' 4 1/8"x4 3/4"xh 2 3/8"	1,4 Kg 3.1 lbs

SPEED - STAIRS SETTER

- For fast and accurate setting of steps.
- They replace the use of the bricks, prevents the movement of the tread and the riser.
- The 90° upright keeps the riser in the desired position.
- The graduated and sliding staffs show the projection of the tread over the riser.

- Can be used for tread depth of 5 to 55 mm (from 1/32" to 2 1/8").
- Only useful for monolithic tread and with lowest projections 25 mm (1").

Part No.			Description			
171	8024648000941	8	Speed (pair)	1,5 Kg 3.3 lbs	38x36xh 30 cm 15"x14"xh 12"	13 Kg 28 lbs

KRICK KROCK- WALL LEVELLING GUIDES

- Replaces traditional methods such as tacking in supports or shimming with tile etc....
- Precise "micrometric" adjusting knobs allow you to level your first row of tiles quickly and accurately.
- Especially useful in high moisture areas where a waterproofing membrane is being used and cannot be punctured.

- Especially useful where the floor has slope so that is not possible to start laying directly from the floor.
- Maximum extension 30 cm (12").

Part No.			Description			
131.1	8024648000958	3	Krick Krock	700 gr 24.7 oz	33x33xh 10 cm 13"x13"xh 4"	2,5 Kg 5.5 lbs



TOOL BAG

MADE IN ITALY

NEW



PACKAGE



CARTON BOX

- Protective padded bag ideal for both transporting and storing the machine (i.e.: E-Fox) or other tools/accessories.
- Provided with both handles and shoulder belt.
- One internal pocket.
- Equipped with a zip along the opening on the top of the bag.
- Made in Italy.

MODEL AND SPECIFICATIONS

Part No.			Description			
321TS01A	8050532019577	1	Tool bag	50 gr 1.8 oz	-	-

TOOLS

